



LUZMILA RODRIGUEZ MORENO

CENTURY 21.

Inmobiliaria Sebucán

ID: 4691

lrodriguez01@century21.com.ve

+584141321899



Galpon for Rent

Boleita. Calle Republica Dominicana Edificio, Sucre, Caracas, Miranda



Rent: \$3,400

Property type: Galpon

Operation: Rent

- **Land:** 800.0 sqm
- **Building:** 800.0 sqm
- **Bathrooms:** 4

- | | | | |
|----------|---------------|---------------------------------|-----------------|
| • Water | • Electricity | • Hall | • Laundry |
| • Office | • Bathrooms | • Puestos de Estacionamiento: 3 | • Reception |
| | | | • Entrance ramp |

Property status

Age: 1972

Description

Spacious and solid industrial warehouse. Reinforced concrete foundations that support the structural plate at the level of the ground surface. Reinforced concrete structure in columns, beams and slabs. Clay block walls covered with friezes and concrete blocks. The warehouse has all public services; three-phase current, (domestic and industrial) water, telephone networks, as well as rainwater drainage, water tank and Santa María type doors. Ground floor reception area, waiting room, two (2) offices, two (2) bathrooms, two (2) storage rooms, two (2) changing rooms. One (1) cargo lift Upper floor: two (2) offices, one (1) bathroom. One (1) load lift Excellent location in an industrial-commercial area Close to shopping centers, schools, Religious centers and public transportation with access to the main roads of the city. DESCRIPTIVE MEMORY AND PLANS AVAILABLE IN THE OFFICE. Excellent for storage

Location

Boleita. Calle Republica Dominicana Edificio, Sucre, Caracas, Miranda

References

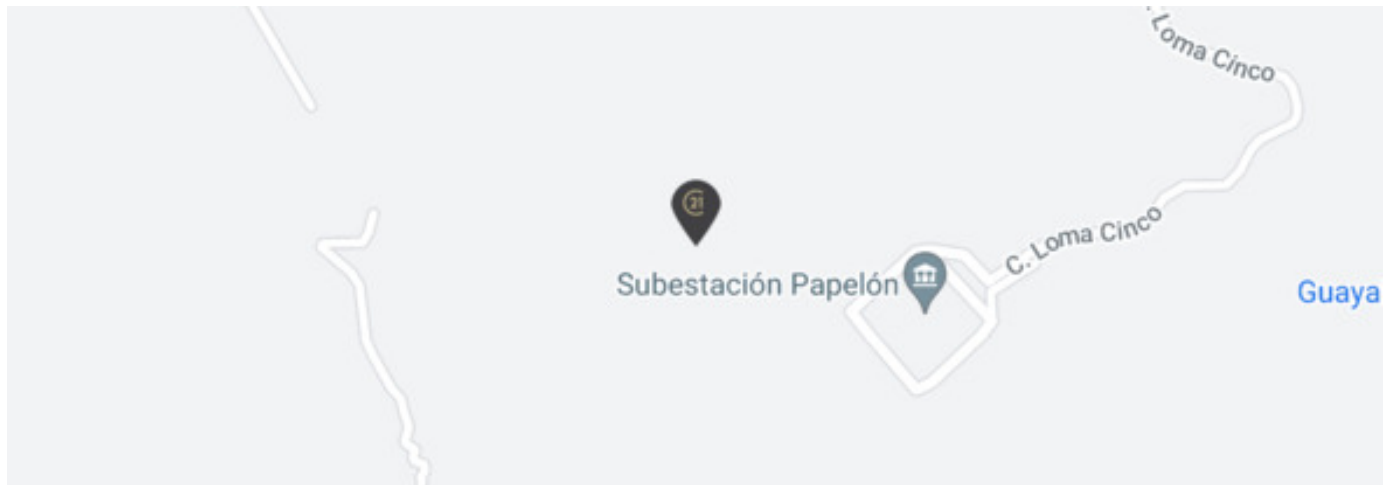
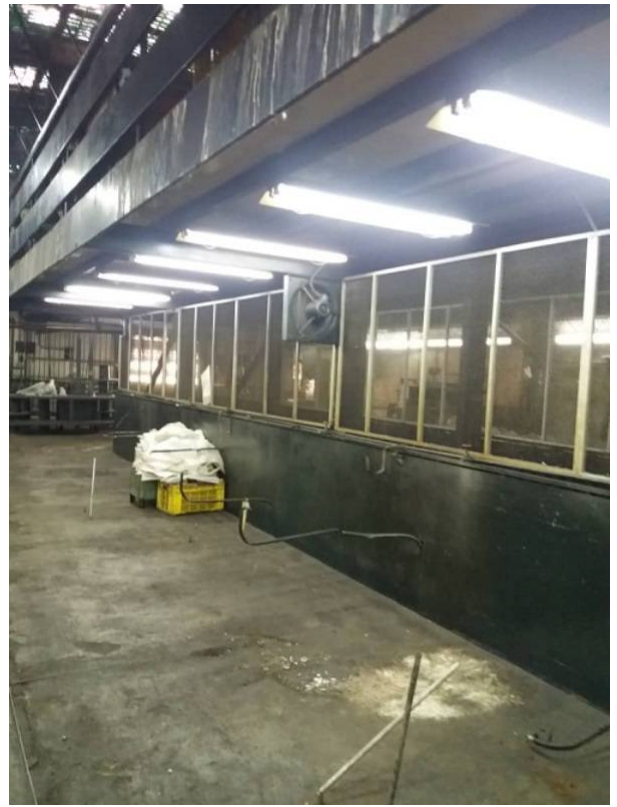
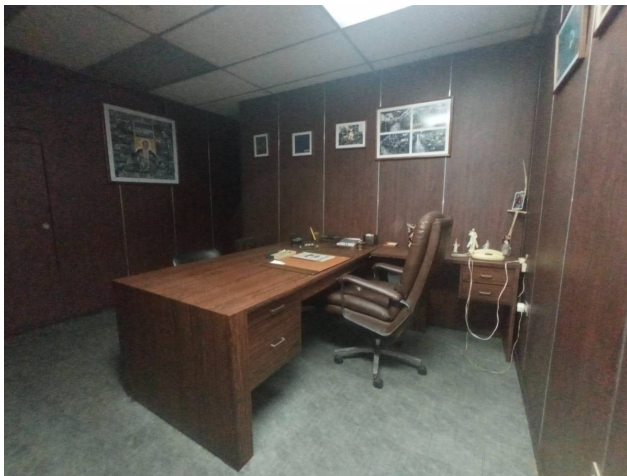
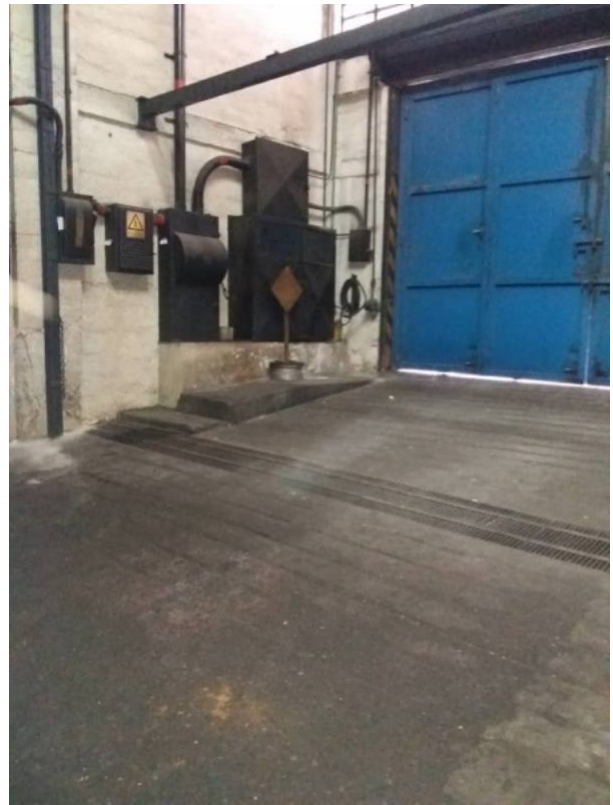


Photo Catalog









Av. Rómulo Gallegos, Urb. Santa Eduvigis Torre Poliprima, Ofic. 5-A,, Sucre, Caracas, Miranda
T 02122856123 | sebucan@century21.com.ve | <https://www.century21.com.ve>

Property subject to availability.

Price subject to change without notice.

The sending of this file does not commit the parties to the subscription of any legal document. The information and measurements are approximate and must be confirmed with the relevant documentation.