

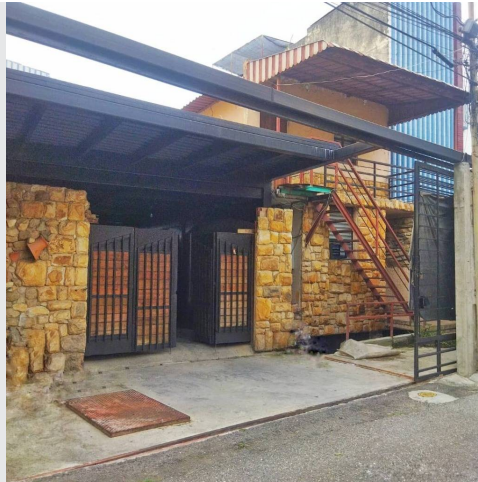


**Arturo Mirabal
Cabrera**

CENTURY 21

Sabana Grande Plus

ID: 31041
amirabal@century21.com.ve
+584243474757



Condominium for Rent

Sucre, Caracas, Miranda



Rent: \$350

Property type: Condominium

Operation: Rent

- **Land:** 50.0 sqm
- **Building:** 50.0 sqm
- **Bedrooms:** 1
- **Bathrooms:** 1
- **Parking lots:** 1
- **Condition:** Very good
- **Showers:** 1

- | | | | |
|---------------------------------|------------------------------|------------------------------|--------------------------------|
| • Water | • Electricity | • Internet | • Individual air conditioning |
| • Furnished | • Tipo de Estacionamiento: 2 | • Tipo de Estacionamiento: 1 | • Acceso al Estacionamiento: 3 |
| • Puestos de Estacionamiento: 1 | | | |

Property status

State: Very good

Age: 1996

Description

This cozy Annex is offered for Rent, located in Los Chorros, on Avenida Principal El Rosario! This versatile space is available and can be perfectly adapted to be used as an Office, Annex or Warehouse.

With a distribution of 50 square meters, this annex offers all the necessary amenities to satisfy your Residential or Commercial needs. It has a private bathroom, a bedroom and an open space that includes the living room and equipped kitchen.

The property is located in a quiet and private area, which guarantees a peaceful and safe environment to work. Plus, you can enjoy the convenience of having parking available for you and your visitors.

The annex is delivered with an air conditioning, a refrigerator and a kitchen.

Don't miss the opportunity to settle in this Annex for Rent.

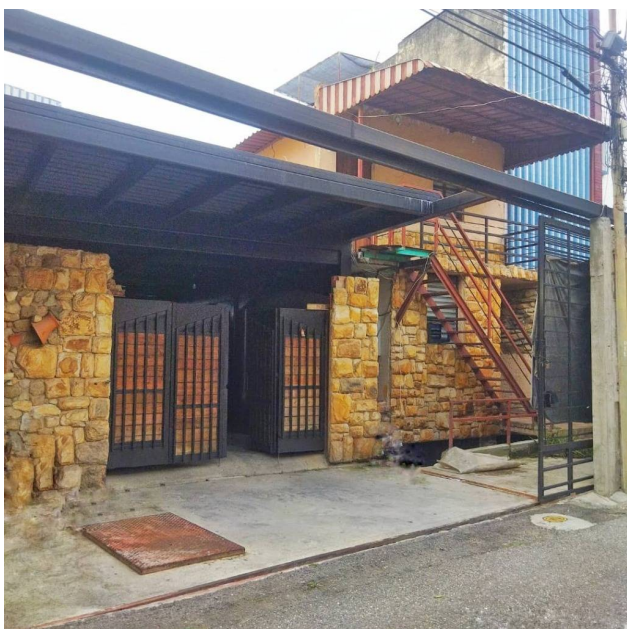
Location

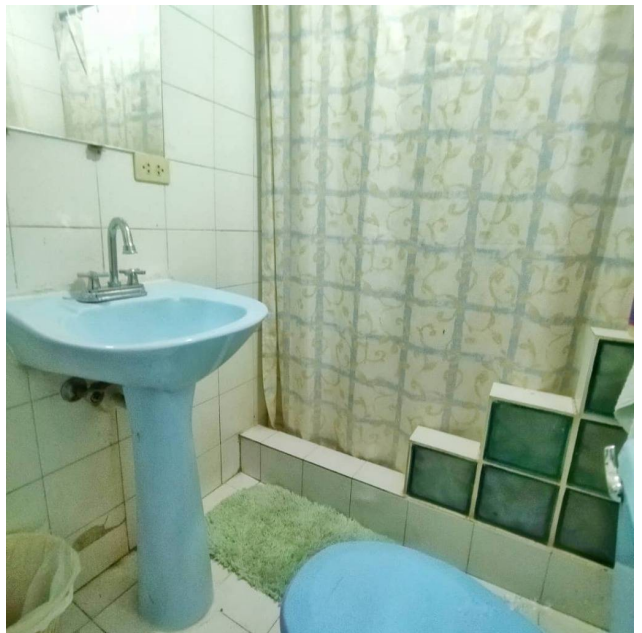
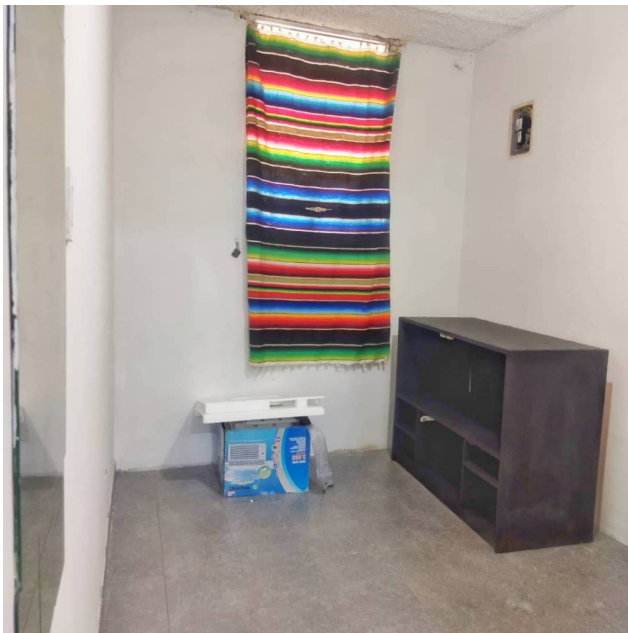
Sucre, Caracas, Miranda

References



Photo Catalog





Av. Santos Erminy, Edificio Park Side, Piso 4, Oficina 41, Libertador, Caracas, Distrito Capital
T +582127625716 | sabanagrandeplus@century21.com.ve | <https://www.century21.com.ve>

Property subject to availability.

Price subject to change without notice.

The sending of this file does not commit the parties to the subscription of any legal document. The information and measurements are approximate and must be confirmed with the relevant documentation.