



Francisco Valero

CENTURY 21.

Orta Poleo

ID: 29935

fvalero@century21.com.ve

+584144564282



Retail for Sale

Av Francisco de Miranda Centro Empresarial La Esmeralda, Chacao, Caracas, Miranda



Sale: \$233,495

Property type: Locale

Operation: Sale

- **Land:** 54.9 sqm
- **Building:** 54.9 sqm
- **Bathrooms:** 2
- **Parking lots:** 2
- **Condition:** New
- **Number of Elevators:** 8

- Water
- Suitable professional

- Caminera
- Tipo de Estacionamiento: 1
- Cuarto de congelación

- Garita de Vigilancia
- Entrance ramp

- Sewer
- Estacionamiento Sotano

- Security
- Tipo de Estacionamiento: 1
- Iluminación artificial

- Reception
- Ground level access

- Electricity
- Estacionamiento Visitantes
- 24 hour security
- Acceso al Estacionamiento: 4
- Sistema contra incendio

- Access control
- Construction status: En construcción

- Office
- In construction
- Ductería de A/A
- Daytime safety
- Puestos de Estacionamiento: 2
- Sistema detector de humo
- Good access
- Building type: Comercial

Property status

State: New

Age: 2024

Description

Designed with a modern double glass façade with high energy savings and climate control that serves as a showcase for the most beautiful views of both our Waraira Repano (Cerro Ávila) and our beautiful Capital, the La Esmeralda Business Center, stands as the new Architectural Jewel. from Caracas.

Designed by the renowned Architect Manuel Fuentes Madriz, National Architecture Prize in 1976 for the outstanding design of the Europa Tower, as well as multiple recognitions for his clean and pure lines that define his great architectural projects, such as the Mercantile Tower, the Latvia Tower. , Torre La Castellana, the Lago Mall Shopping Center, the Banorte building, among others, who has elevated his architectural genius to its maximum splendor with this great Capital Jewel: The La Esmeralda Business Center.

This imposing Business Center has two Towers with 17 levels of Offices each, which gives you multiple options when choosing the space that best suits the organizational objectives of your company. We also have 4 levels of parking available for owners of offices and commercial premises, as well as 6 levels of parking for your visitors.

The La Esmeralda Business Center also has a large auditorium with capacity for 270 people, for the presentation of corporate events and cultural activities of wide interest.

Regarding the space that we offer for your company, on this occasion we present this excellent 40 m2 Commercial Premises, which will be delivered in Obra Gris, which will allow you to design it according to your most ambitious projects and even adjusted to the standards of the franchise brand that could represent. Likewise, this Commercial Premises will be delivered with a gas point, ventilation point, fire fighting system, drainage and sewage point, electrical panel and chilled water pipe for air conditioning. On each office level there are bathrooms for the general public.

If you consider that you want a Commercial Premises of different sizes or for another use, such as selling jewelry, boutique, clothing, etc., contact me anyway, since we have more than 20 commercial premises available ranging from 50 m2 to 300. m2. . Likewise, if you are looking for an office to strengthen your company and promote the growth of your venture.

Without a doubt, the time has come for the Great Takeoff of your venture, so don't wait any longer and allow me to guide you in this important step for your life and yours.

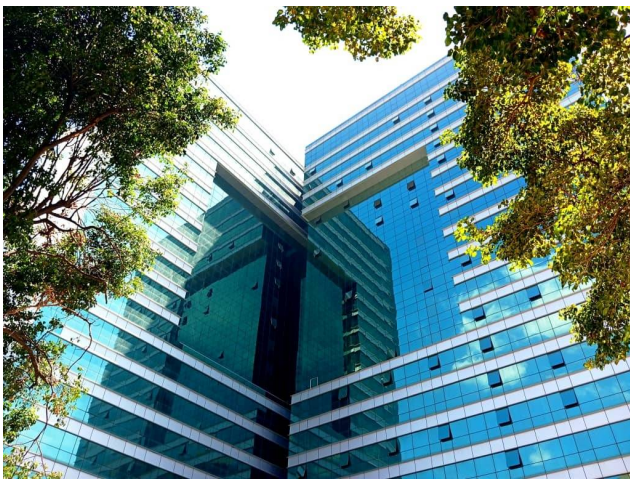
Location

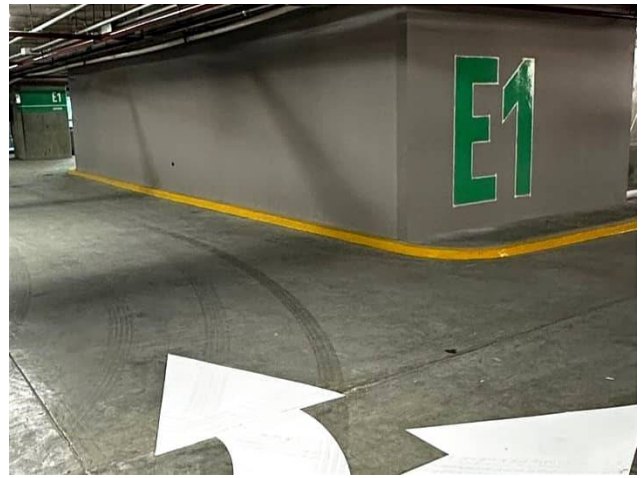
Av Francisco de Miranda Centro Empresarial La Esmeralda, Chacao, Caracas, Miranda

References



Photo Catalog





Av. Fco. de Miranda, Multicentro Empresarial del Este, Edificio Miranda A, Piso 1 , Oficina A-12, Chacao, Caracas, Miranda

T +584242137199 | ortapoleo@century21.com.ve | www.c21ortapoleo.com

Property subject to availability.

Price subject to change without notice.

The sending of this file does not commit the parties to the subscription of any legal document. The information and measurements are approximate and must be confirmed with the relevant documentation.