



**Gregorio Juan Agra**  
Rama

**CENTURY 21.**  
Bricks Margarita

**ID: 28516**  
**gagra01@century21.com.ve**  
**+584120969006**



**House for Sale**

**Maneiro, Pampatar, Nueva Esparta**



**Sale: \$40,000**

**Property type: Home**

**Operation: Sale**

- **Land:** 350.0 sqm
- **Building:** 225.0 sqm
- **Bedrooms:** 4
- **Bathrooms:** 4
- **Parking lots:** 2
- **Condition:** Excellent

- |  |   |   |  |
|--|---|---|--|
| <ul style="list-style-type: none"> <li>• Pets Allowed</li> <li>• Electricity</li> <li>• Kitchen</li> <li>• Gallery</li> <li>• Bathrooms</li> <li>• Security</li> </ul> | <ul style="list-style-type: none"> <li>• Water</li> <li>• Internet</li> <li>• Dining Room</li> <li>• Yard</li> <li>• Individual air conditioning</li> </ul> | <ul style="list-style-type: none"> <li>• Cable</li> <li>• Vía Pavimentada</li> <li>• Dining room</li> <li>• Laundry</li> <li>• Furnished</li> <li>• Bright</li> </ul> | <ul style="list-style-type: none"> <li>• Sewer</li> <li>• Phone</li> <li>• Cuarto de Servicio</li> <li>• Courtyard</li> <li>• Pet friendly</li> <li>• Perimeter</li> </ul> |
|--|---|---|--|

**Property status**

State: Excellent  
Age: 2003  
Without Mortgage: Yes

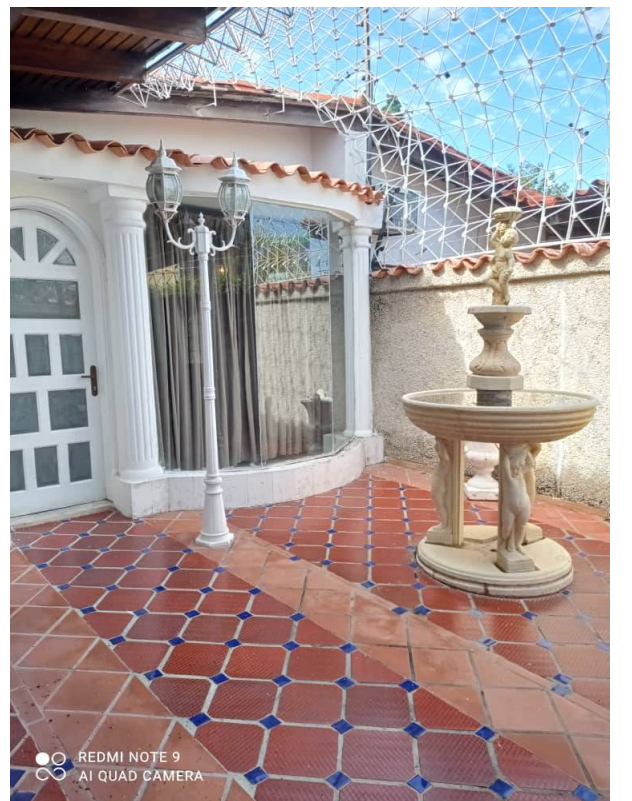
**Description**

Spacious, comfortable and cozy house. It has 4 comfortable bedrooms, 2 of them with en-suite bathrooms, a spacious living room, kitchen, 2 service bathrooms. It has a small backyard, a jacuzzi, a bar with a sink and a porch. The house has a very good location! It is an excellent investment opportunity!

**Location**

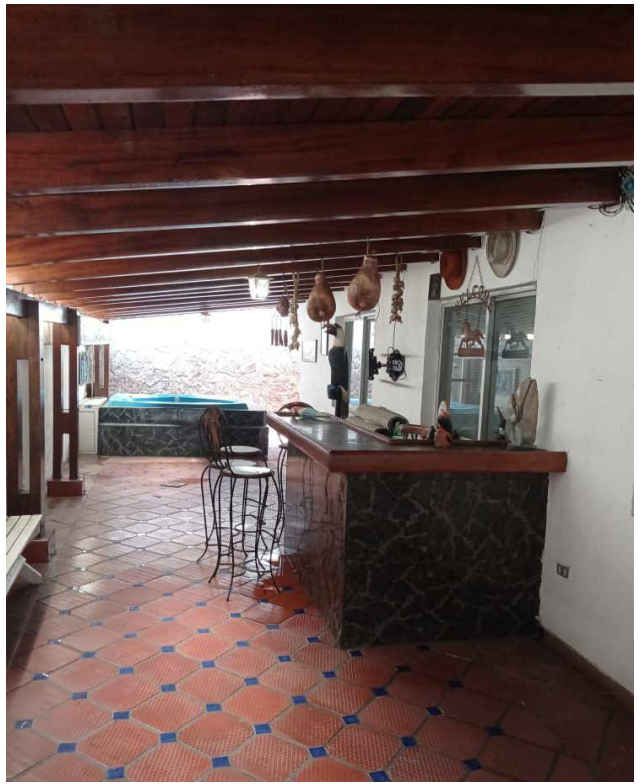
Maneiro, Pampatar, Nueva Esparta

**Photo Catalog**











**Av Antonio José de Sucre CC Jorge Coll, Mezzanina, Local 25, Maneiro, Pampatar, Nueva Esparta**  
**T +584248807258 | [bricksmargarita@century21.com.ve](mailto:bricksmargarita@century21.com.ve) | <https://www.century21.com.ve>**

Property subject to availability.

Price subject to change without notice.

The sending of this file does not commit the parties to the subscription of any legal document. The information and measurements are approximate and must be confirmed with the relevant documentation.