



YUSMELIS AGUILAR

**CENTURY 21.**

Las Olas Bienes Raices

ID: 27251  
yaguilar01@century21.com.ve  
+584120889770



**Retail for Rent**

Casco Central Centro Comercial Patty, Diego Bautista Urbaneja, Lechería, Anzoategui



**Rent: \$320**

**Property type: Locale**

**Operation: Rent**

- **Land:** 32.0 sqm
- **Building:** 32.0 sqm
- **Half Baths:** 1
- **Stories:** 3
- **Kitchen:** sinCocina
- **environments:** 1

- |               |                    |                   |               |
|---------------|--------------------|-------------------|---------------|
| • Water       | • Cable            | • Sewer           | • Electricity |
| • Natural gas | • Internet         | • Vía Pavimentada | • Office      |
| • Bathrooms   | • 24 hour security |                   |               |

**Property status**

Age: 2000

Without Mortgage: Yes

## Description

Offers COMMERCIAL PREMISES for sale and rent at C.c Patty Lechería

1st floor

Location 1

20 m<sup>2</sup> Rent: \$250

Sale: \$22,000

Local 3

25 m<sup>2</sup>

Rent: \$300

Sale: \$24,000

Local 4

32 m<sup>2</sup> (Located in a corner)

Rent: \$320

Sale: \$30,000

The Shopping Center has a common bathroom, each location has Split type air conditioning

Excellent location near pharmacy Lido, Supermarkets, Pharmacies, Bakeries Contact me for more information

---

## Location

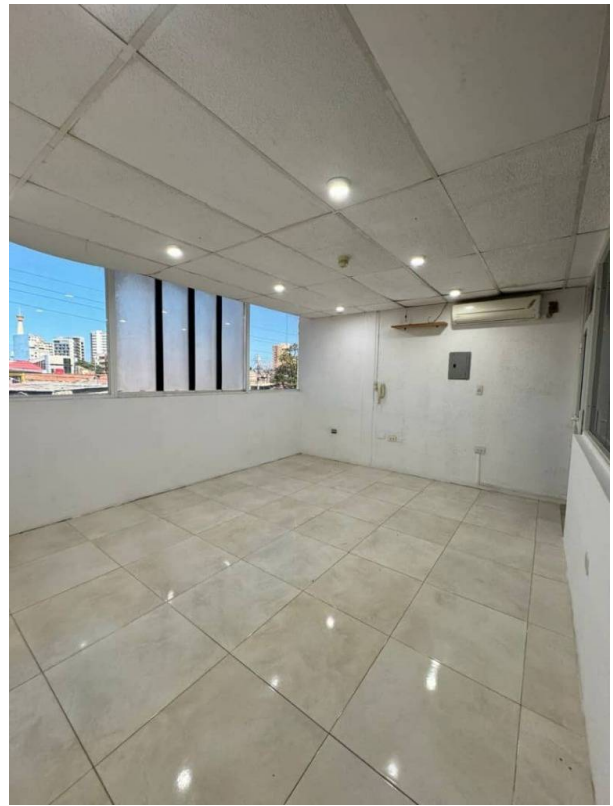
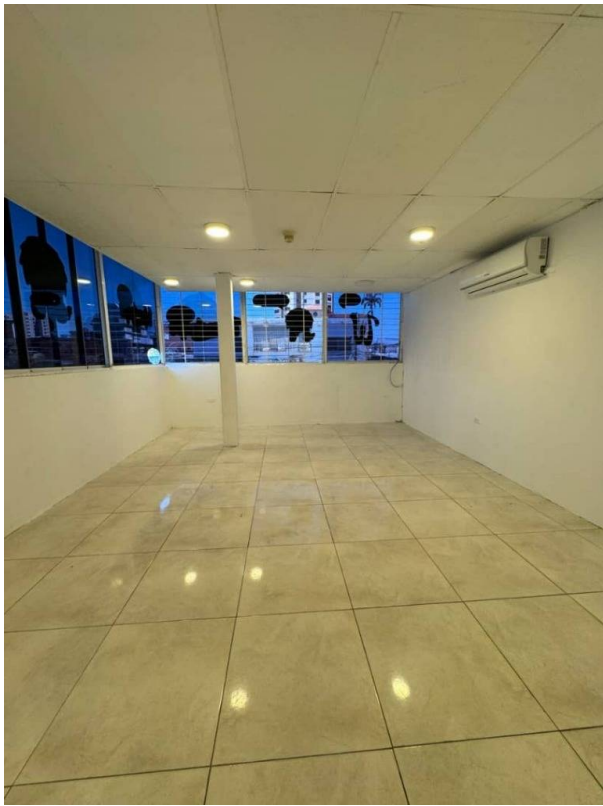
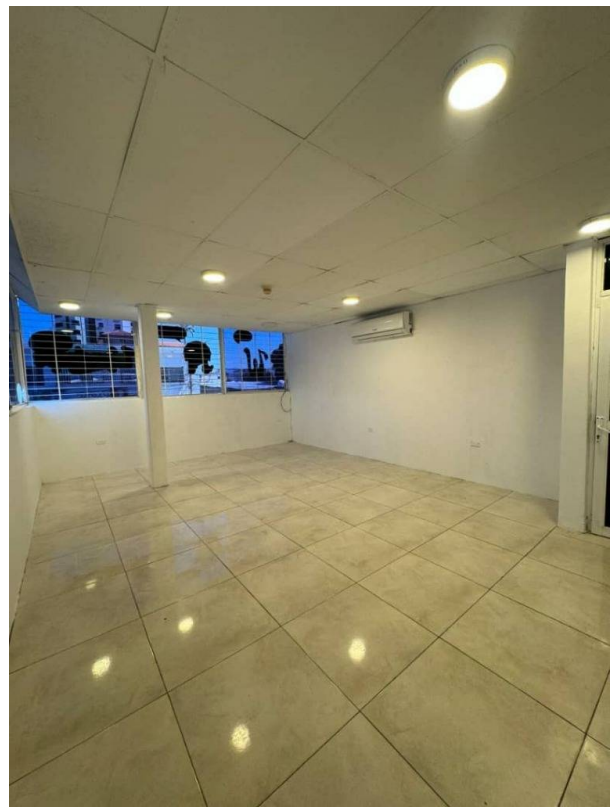
Casco Central Centro Comercial Patty, Diego Bautista Urbaneja, Lechería, Anzoátegui

## References



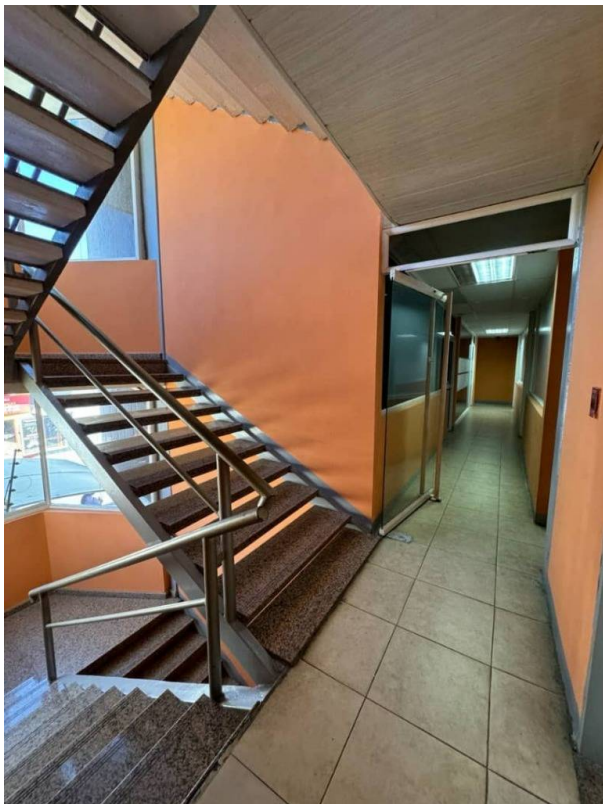
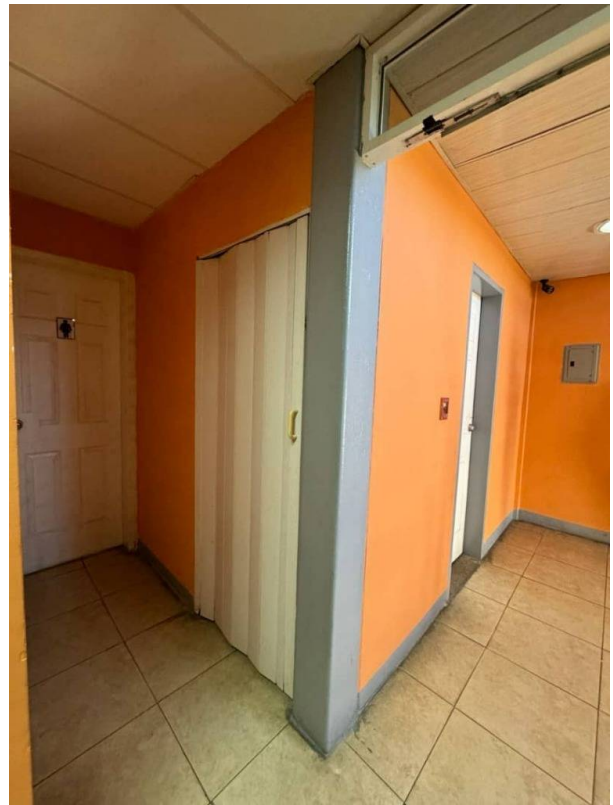
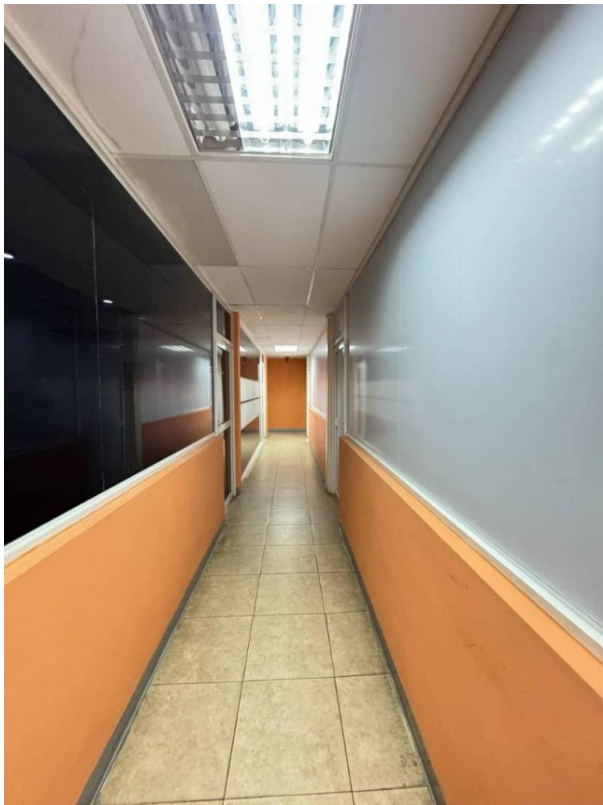
---

## Photo Catalog









**Prolongacion de la Costanera con Calle Juan Griego. C.C. Costa Center, Piso 1 Local 1-4,,Diego Bautista Urbaneja, Lechería, Anzoategui**

**T +584148186349 | lasolasbienesraices@century21.com.ve | www.century21lasolas.com**

Property subject to availability.

Price subject to change without notice.

The sending of this file does not commit the parties to the subscription of any legal document. The information and measurements are approximate and must be confirmed with the relevant documentation.

