



Fabio Andres Narváez Di
Lorenzo

CENTURY 21.

Paraiso Plaza

ID: 26571
fnarvaez@century21.com.ve
+584142848558



Negocio for Sale

Av principal del cafetal CC plaza las americas Nivel Boulevard Etapa Nueva Av principal del cafetal CC plaza las americas Nivel Boulevard Etapa Nueva, Baruta, Caracas, Miranda



Sale: \$45,000

Property type: Negocio

Operation: Sale

-
- **Land:** 83.0 sqm
 - **Building:** 83.0 sqm
 - **Bathrooms:** 2

-
- Puestos de Estacionamiento: 1

Property status

Age: 2000

Without Mortgage: Yes

Description

Restaurant Goodwill Sale

Located in the Plaza las Américas Shopping Center, Cafetal Boulevard Level, new stage.

Permits in perfect order and functioning.

Footage Area: 83 m²

Terrace with a very pleasant view of the Boulevard del Cafetal with more than 8 tables to serve more than 32 guests.

Stereo

3 32-inch TVs

25m bar

Liquor License

All economic activity licenses up to date.

Permits up to date

Fire control system and 220v electricity.

Coffee machine, ice cream machine, freezer, refrigerator

high quality industrial pizza ovens

Computer for Tax billing.

Excellent Industrial Kitchen fully equipped with Industrial Refrigerator 42 feet, freezer,

Steel work table and shelves

1,000 liter tank.

2 bathrooms (men and women)

Public parking and soon VIP

Ref: 45,000

Location

Av principal del cafetal CC plaza las americas Nivel Boulevard Etapa Nueva Av principal del cafetal CC plaza las americas Nivel Boulevard Etapa Nueva, Baruta, Caracas, Miranda

References

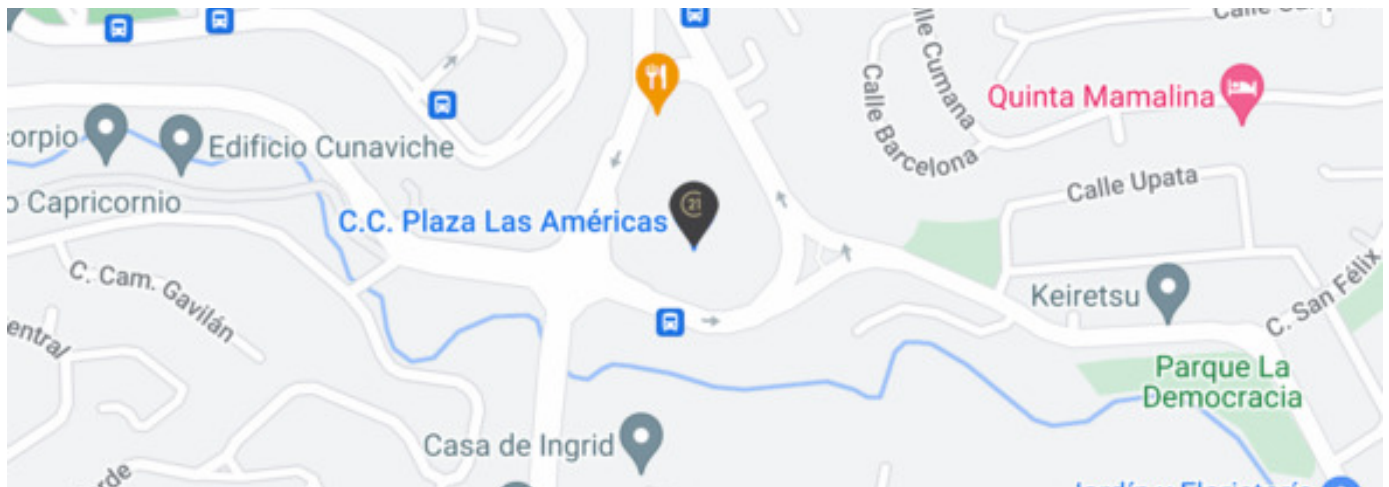
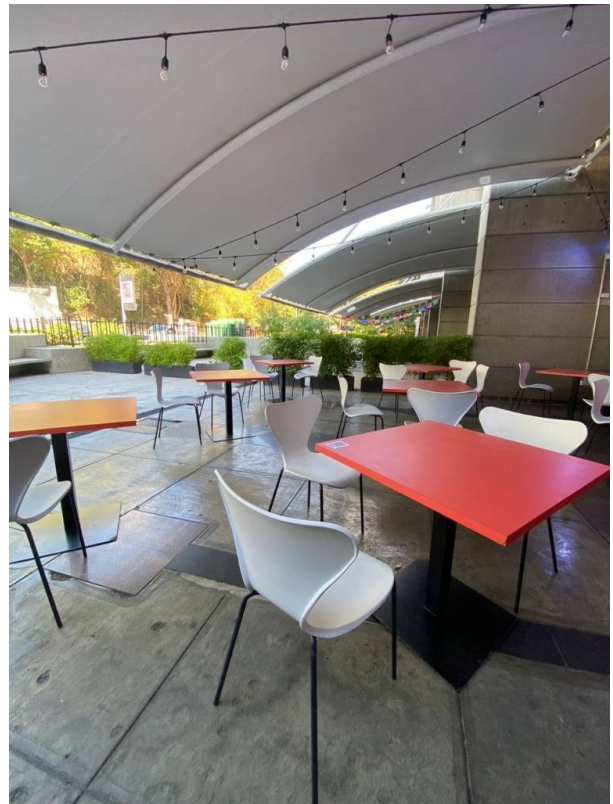
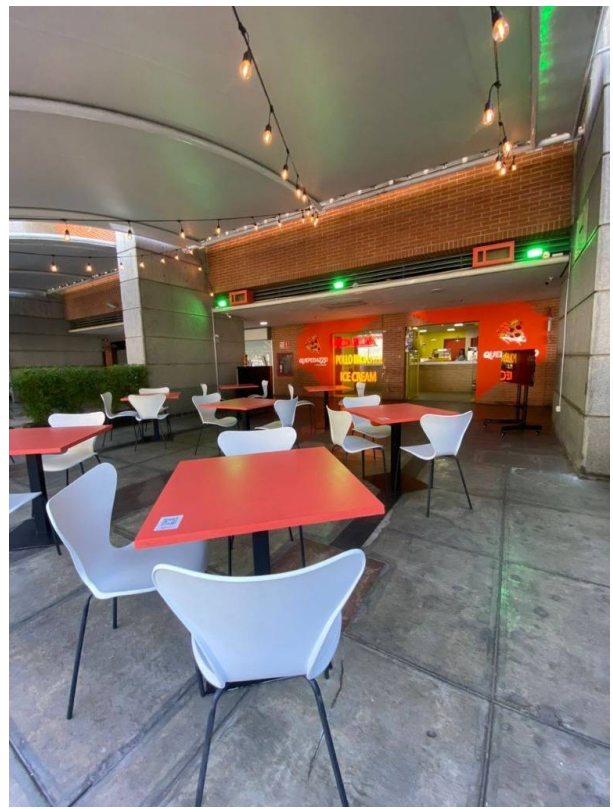
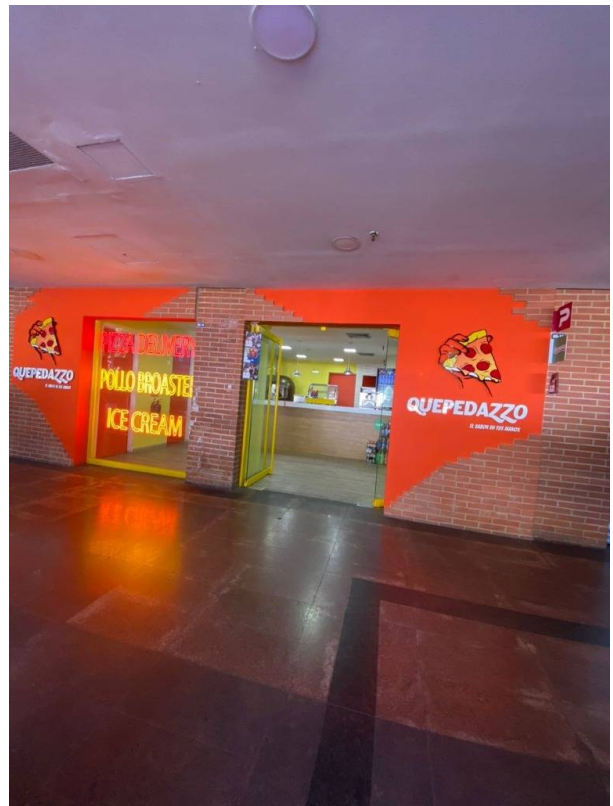
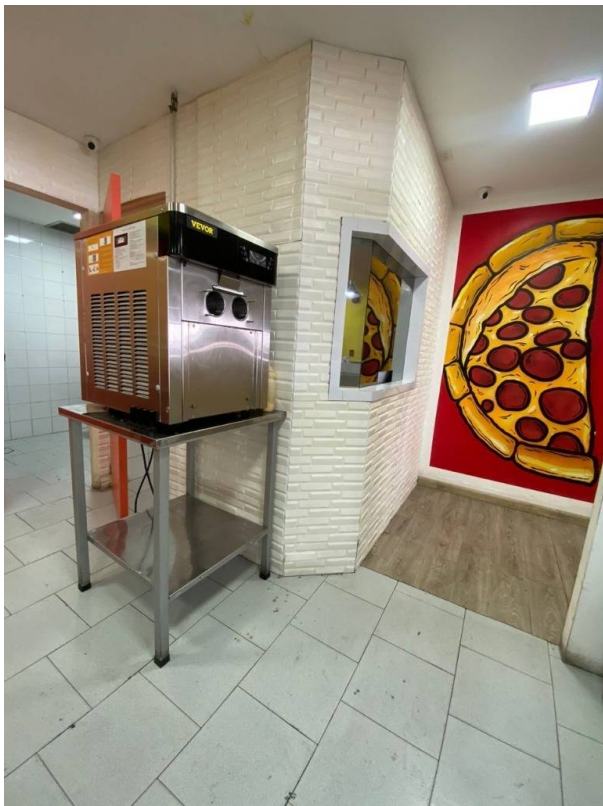
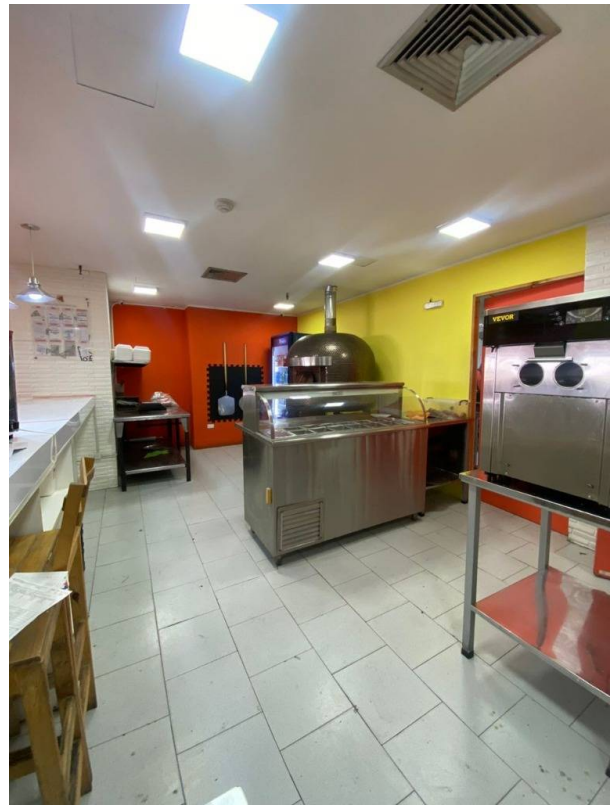
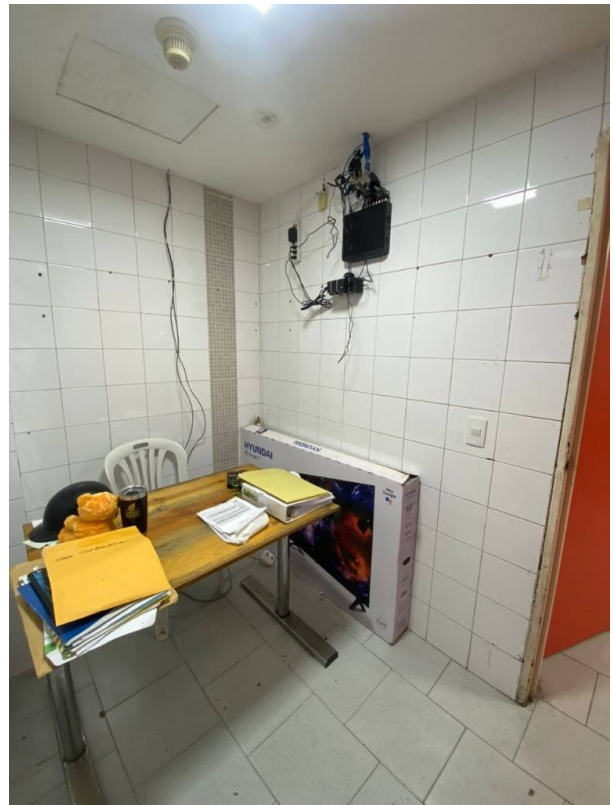


Photo Catalog









**Calle alto Pinar, Res. Carolina PB, Local 3 . El Paraiso, Libertador, Caracas, Distrito Capital
T 582124518494 | paradisoplaza@century21.com.ve | <https://www.century21.com.ve>**

Property subject to availability.

Price subject to change without notice.

The sending of this file does not commit the parties to the subscription of any legal document. The information and measurements are approximate and must be confirmed with the relevant documentation.

