



**Condominium for Sale**

Los Apamates, Sector Los Apamates Conjunto Residencial Los Apamates, Fernando Peñalver, Puerto Píritu, Anzoategui



**Sale: \$18,000**

**Property type: Condominium**

**Operation: Sale**

- **Land:** 79.7 sqm
- **Building:** 79.7 sqm
- **Bedrooms:** 2
- **Bathrooms:** 1
- **Showers:** 1

- Pets Allowed
- Electricity
- Kitchen
- Courtyard

- Alarm
- Suitable professional

- Water
- Internet
- Dinning Room
- Bathrooms

- Furnished
- Estacionamiento Aire Libre

- Cable
- Vía Pavimentada
- Laundry
- Individual air conditioning
- Suitable credit
- Perimeter
- Security

- Sewer
- Phone
- Living room
- Aire Acondicionado Central
- Pet friendly
- Churuata
- 24 hour security

**Property status**

Age: 2016

Without Mortgage: Yes

## Description

We offer for sale a beautiful apartment, completely remodeled and updated.

The apartment has all its equipment and furniture (included in the sale price), it has top quality porcelain floors, the kitchen has wooden cabinets and granite countertops, it has two bedrooms with closets, a patio area and a side hallway for internal use of the apartment, thanks to its Privileged location; Ground floor and corner.

The price is negotiable depending on the equipment and furniture you wish to purchase.

Do not hesitate to contact us.

Opportunity Price

---

## Location

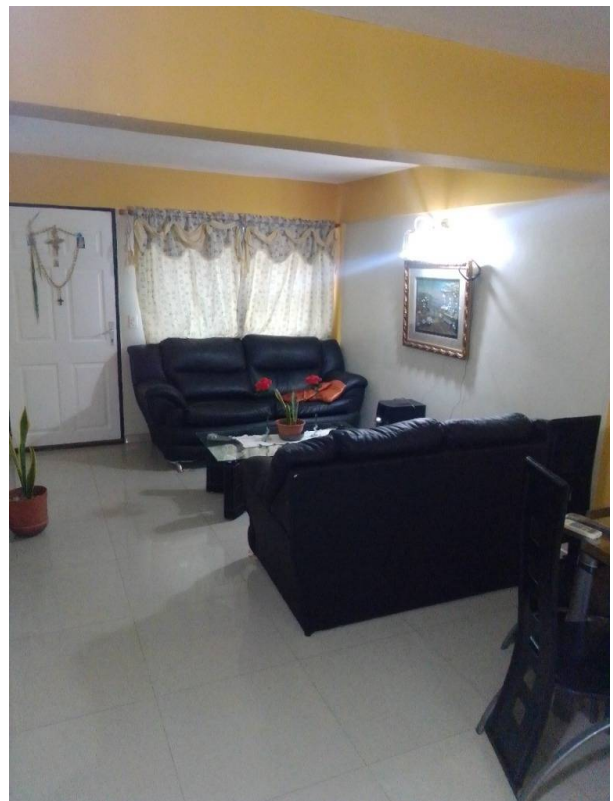
Los Apamates, Sector Los Apamates Conjunto Residencial Los Apamates, Fernando Peñalver, Puerto Píritu, Anzoátegui

## References

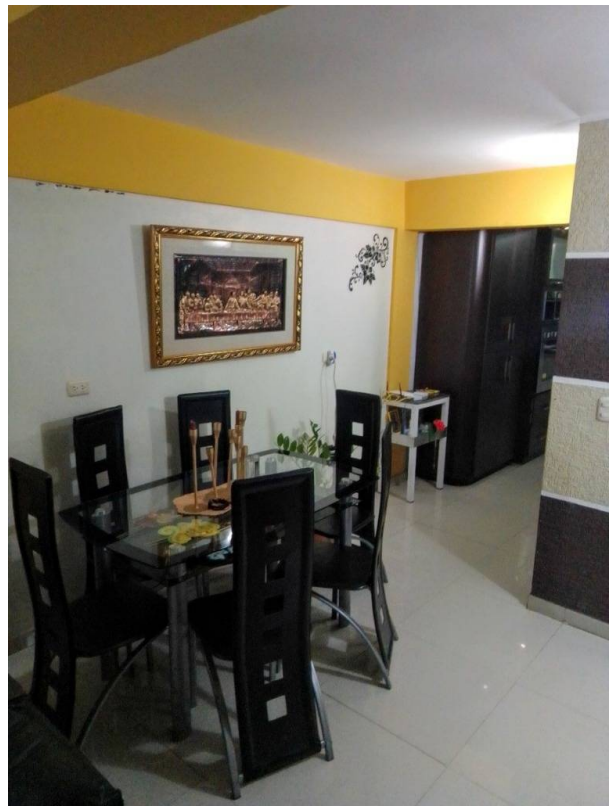
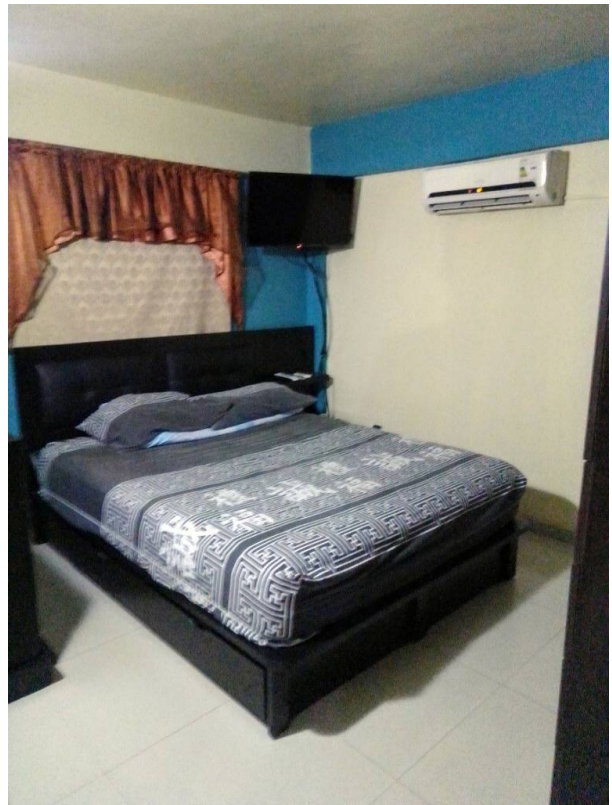
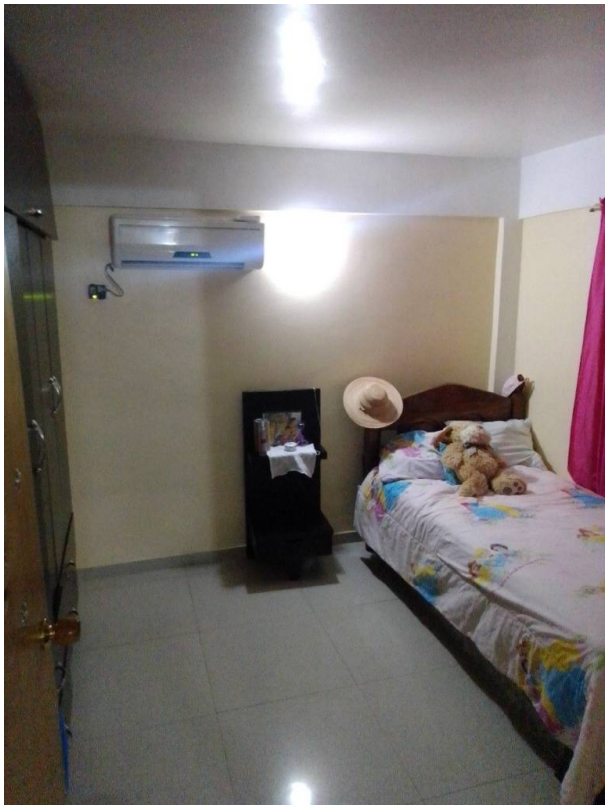


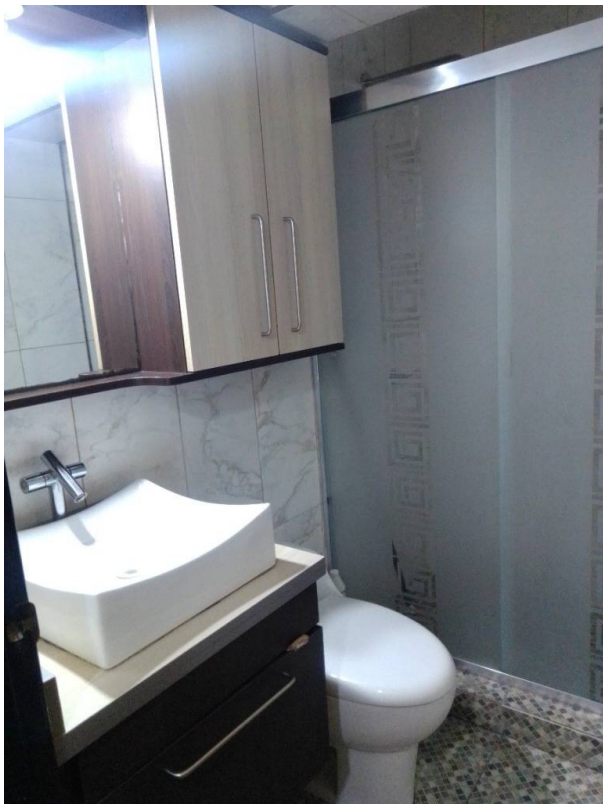
---

## Photo Catalog









**Calle Arismendi y Calle El Calvario Centro Comercial Royal Plaza, Local N°4, PB, Fernando Peñalver, Puerto Píritu, Anzoátegui**

**T +584124964848 | [oceanik2@century21.com.ve](mailto:oceanik2@century21.com.ve) | <https://www.century21.com.ve>**

Property subject to availability.

Price subject to change without notice.

The sending of this file does not commit the parties to the subscription of any legal document. The information and measurements are approximate and must be confirmed with the relevant documentation.

