



Paola Giannone Córdova

CENTURY 21.

Marina Bienes Raíces

ID: 21972
+584248212887



Townhouse for Sale

Av R-18 Townhouse Pueblo viejo Isla Milos, Diego Bautista Urbaneja, Lechería, Anzoátegui



Sale: \$155,000

Property type: Town-house

Operation: Sale

- **Land:** 61.3 sqm
- **Building:** 89.3 sqm
- **Bedrooms:** 2
- **Bathrooms:** 1
- **Half Baths:** 2
- **Parking lots:** 1
- **Stories:** 2
- **Showers:** 1

- Kitchen
- Cable
- Internet
- Balcony
- Courtyard

- Pool
- Sewer
- Vía Pavimentada
- Maletero
- Bathrooms
- Estacionamiento Aire Libre
- 24 hour security

- Pets Allowed
- Electricity
- Phone
- Dinning Room
- Aire Acondicionado Central
- Estacionamiento Visitantes
- Tipo de Estacionamiento: 1

- Water
- Natural gas
- Attic
- Dining room
- Furnished
- Pet friendly
- Gym
- Automatic watering
- Puestos de Estacionamiento: 1

Property status

Age: 1977

Without Mortgage: Yes

Description

Do you want to live in the safest area of Anzoátegui?

We offer you this excellent option for sale in the exclusive Pueblo Viejo Residential Complex, located in Puerto la Cruz – El Morro Tourist Complex.

It also has extensive and well-kept social areas, being also a set of high revaluation.

This cozy 89m2 Town House is located on the island of Milo and has an area of 89.31 m2.

- Porcelain tile floor
- Modern kitchen with quartz top
- 02 rooms
- 02 and a half baths
- Deposit
- 3 ton central air
- 01 parking space
- Large terrace with its own boat station
- Fiber optic Internet
- Furnished and equipped

In addition, the condominium has sports fields, a playground, multiple swimming pools, a mini Market (Le marché), parking spaces for visitors, 24/7 private security, and a common dock.

Location

Av R-18 Townhouse Pueblo viejo Isla Milos, Diego Bautista Urbaneja, Lechería, Anzoategui

References

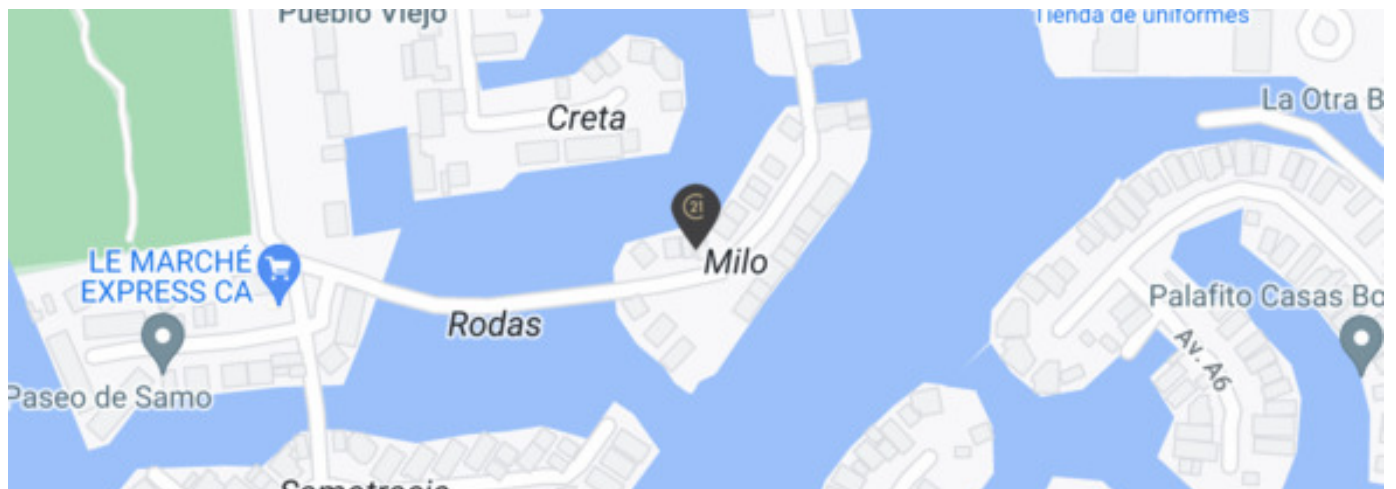
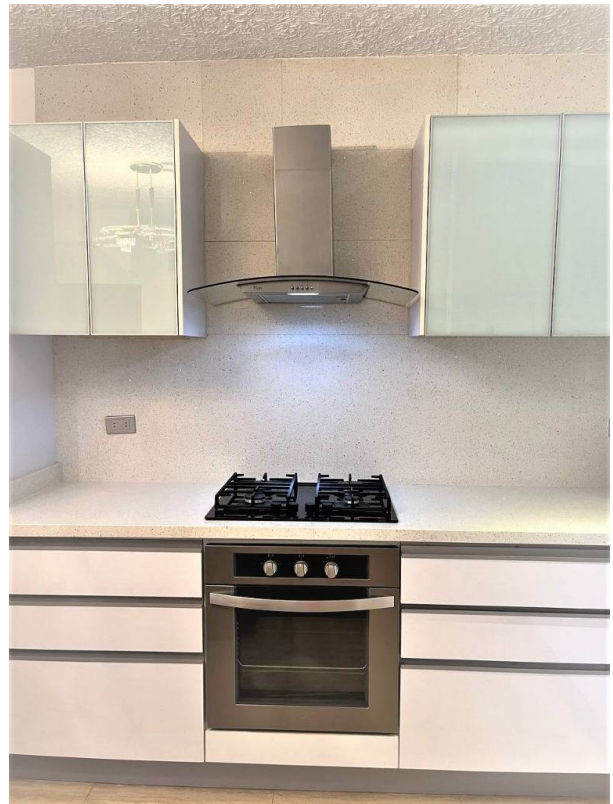
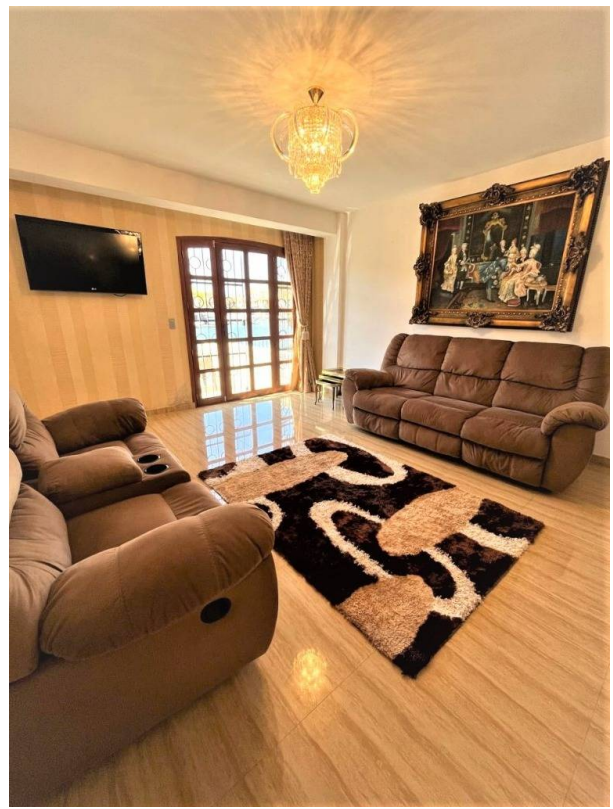
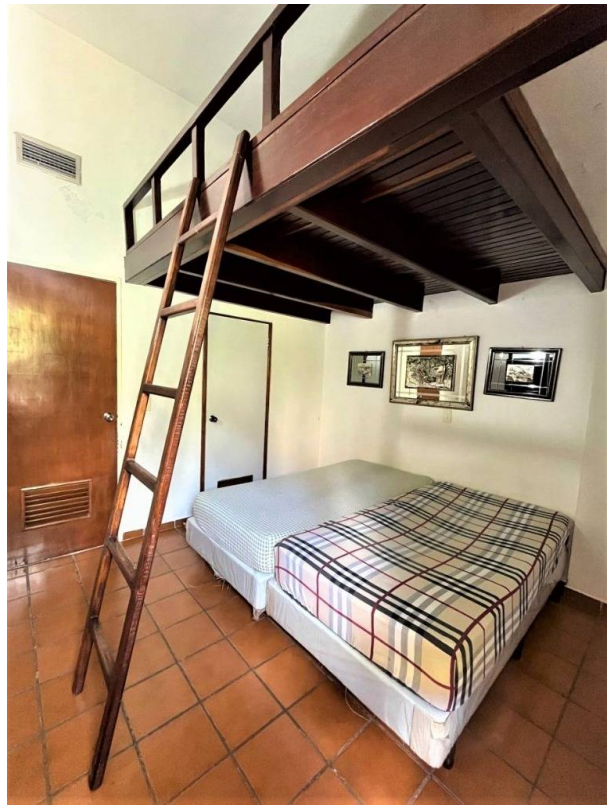


Photo Catalog







**Avenida El Ejercito, Centro Comercial El Dorado, Ala Norte, Planta Alta, Local Comercial N° 14, Simón Bolívar,
Barcelona, Anzoategui**

T +584248959614 | c21marinabienesraices@century21.com.ve

Property subject to availability.

Price subject to change without notice.

The sending of this file does not commit the parties to the subscription of any legal document. The information and measurements are approximate and must be confirmed with the relevant documentation.