

**Galpon for Rent**

Autopista José Antonio Anzoátegui Condominio Industrial Oasis Park, Simón Bolívar,  
Barcelona, Anzoategui

**Rent: \$1,500****Property type: Galpon****Operation: Rent**

- **Land:** 820.0 sqm
- **Building:** 860.0 sqm
- **Bathrooms:** 2
- **Parking lots:** 5
- **Stories:** 2
- **Construction Quality:** High
- **Office area:** 1

- Water
- Puestos de Estacionamiento: 5
- Private parking: 5

- Sewer
- Profitable Construction Area: 860

- Electricity
- Ft per floor: 40

- Vía Pavimentada
- Year of construction: 2018

**Property status**

Age: 2018

Without Mortgage: Yes

## Description

CENTURY21 Offers an investment opportunity with payment facilities in the Oasis Park Industrial Condominium located in Asiento Barbacoas I in the City of Barcelona a few meters from the José Antonio Anzoátegui highway.

The Condominium is made up of 13 industrial sheds, of which seven (7) of them are for sale. Each of the properties with the following characteristics:

Total area 860 M2:

Warehouse area 780 M2.

Office area with 84 M2, distributed in:

Ground floor: an office with bathroom, locker area, dining room and bathroom.

Upstairs: reception room, an office and a bathroom.

Additionally, each shed has five (5) exclusive parking spaces.

In its entirety, the Condominium has an area of 22,895.94 M2 and availability for adaptation and/or unification of the sheds.

In addition, the complex offers: exclusive water well, one (1) 40,000L tank, two (2) septic tanks, one (1) hydropneumatic system, one (1) 300 KVA PAD MOUNTED transformer, (1) power plant of 50 KVA, two (2) surveillance posts and one (1) garbage deposit.

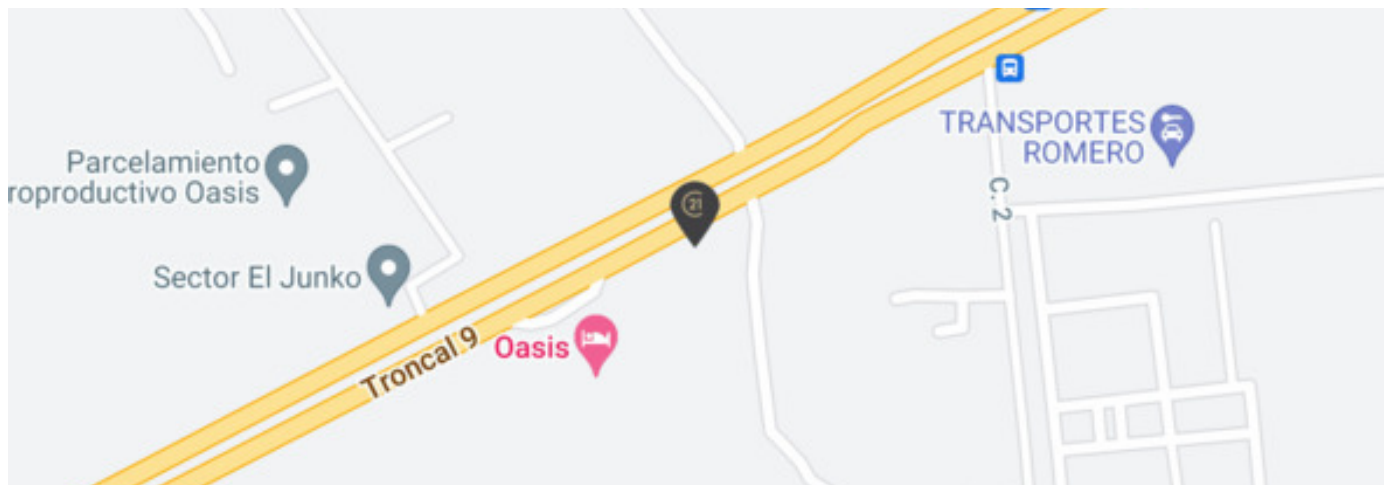
This condominium has a strategic location for industrial use in the oil area, since it is located on the main road artery with connection to the José Antonio Anzoátegui Cryogenic Complex. And as it is located on the José Antonio Anzoátegui Highway, it becomes the ideal place to carry out operations, storage and distribution of all kinds of products to the cities of Barcelona, Lechería and Puerto La Cruz.

---

## Location

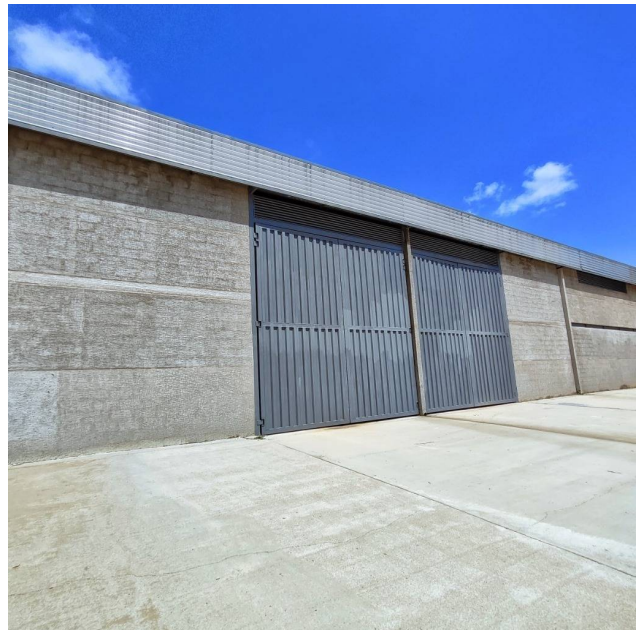
Autopista José Antonio Anzoátegui Condominio Industrial Oasis Park, Simón Bolívar, Barcelona, Anzoategui

## References

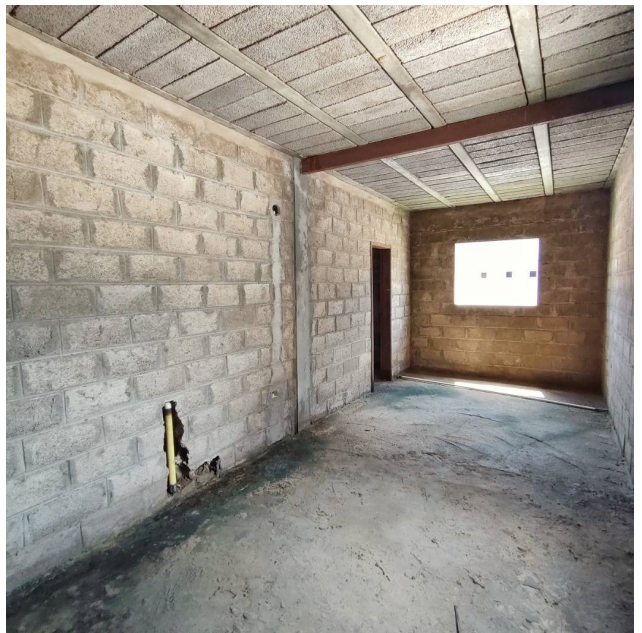
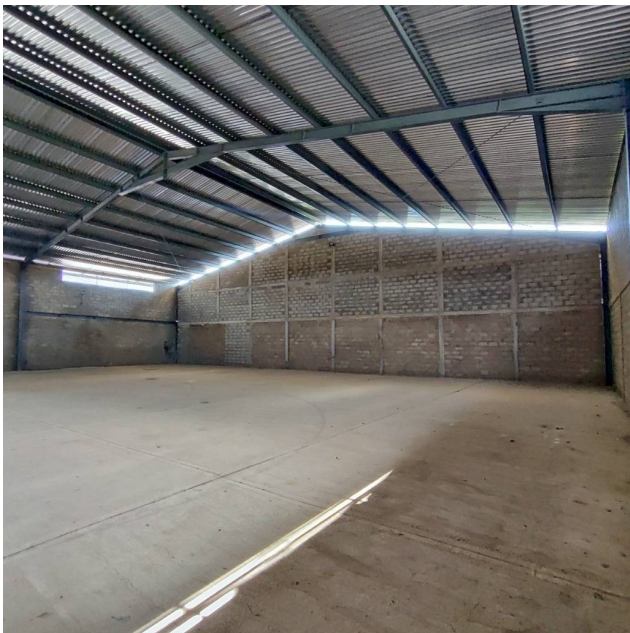
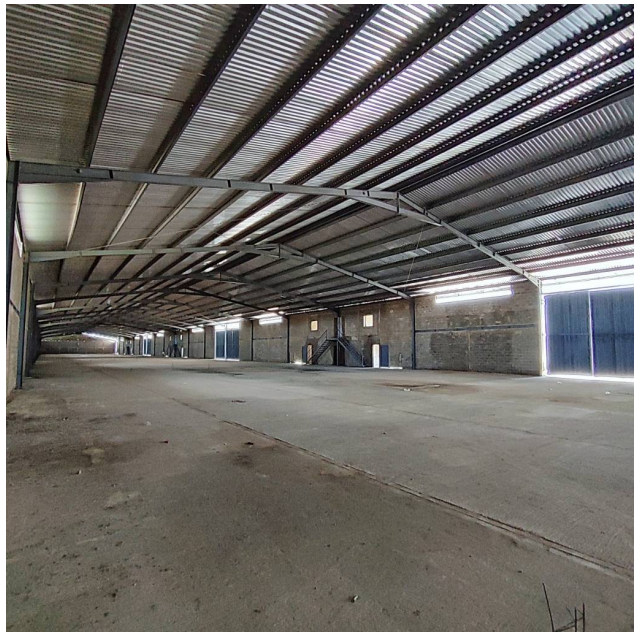
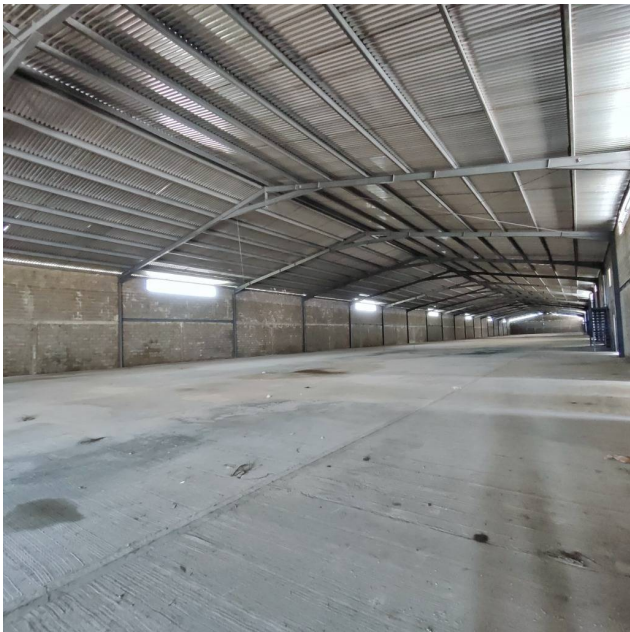


---

## Photo Catalog









**Av. Jorge Rodriguez, Torre BVC, Piso 7, Francisco de Miranda, Barcelona, Anzoategui**  
**T +584127261618 | [costacaribegold@century21.com.ve](mailto:costacaribegold@century21.com.ve) | <https://www.century21.com.ve>**

Property subject to availability.

Price subject to change without notice.

The sending of this file does not commit the parties to the subscription of any legal document. The information and measurements are approximate and must be confirmed with the relevant documentation.