



Ysolina Del Valle Hernandez Salazar

CENTURY 21.

Oceanik

ID: 17169

yhernandez05@century21.com.ve

+584265822193



Offices for Sale

Avenida Intercomunal Jorge Rodriguez Torre BVC, Diego Bautista Urbaneja, Lechería, Anzoategui



Sale: \$930,000

Property type: Offices

Operation: Sale

- Land: 1,058.6 sqm
- Building: 1,058.6 sqm
- Bathrooms: 8
- Parking lots: 12
- Condition: Excellent
- Number of Elevators: 5
- Floor number: 7

- |                          |                              |                    |                                  |
|--------------------------|------------------------------|--------------------|----------------------------------|
| • Water                  | • Electricity                | • Internet         | • Aire Acondicionado Central     |
| • Furnished              | • Estacionamiento Visitantes | • Bright           | • Security                       |
| • Iluminación artificial | • Garita de Vigilancia       | • 24 hour security | • Puestos de Estacionamiento: 12 |
| • Access control         | • Blinds                     | • Reception        | • Cubicles                       |
| • Natural lighting       | • Build style: Moderna       | • Good access      | • Ground level access            |

Property status

State: Excellent

Age: 2002

Without Mortgage: Yes

## Description

Century 21 offers you the possibility of acquiring an excellent property in a high-target Corporate Building, in Lechería, Anzoátegui state.

These are ten integrated offices that make up an approximate area of ONE THOUSAND FIFTY-EIGHT SQUARE METERS AND FIFTY-EIGHT SQUARE DECIMETERS (1,058.58 mts.2) distributed in 52 workstations, 2 data rooms, a conference room and an area kitchenette with large dining room. It also has 12 own parking spaces.

This excellent option is located in La Torre BVC on Avenida Intercomunal Jorge Rodríguez in Lechería. a building with a modern and prestigious architectural design of high representativeness, ideal for national and multinational companies with a recognized corporate image. Its location is privileged and strategic, as it facilitates its rapid accessibility, as well as being close to prestigious residential areas , which translates into safety and comfort for managers and employees when establishing their residences. The BVC Tower offers banking services and shops in the same building. Likewise, within its benefits it has an emergency Power Plant that supplies the entire building, parking spaces for visitors and security 24 hours a day.

Schedule your appointment with us to show you this excellent investment opportunity.

---

## Location

Avenida Intercomunal Jorge Rodriguez Torre BVC, Diego Bautista Urbaneja, Lechería, Anzoategui

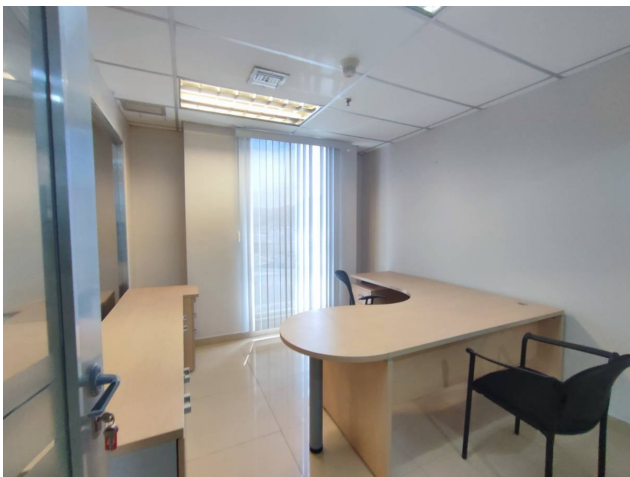
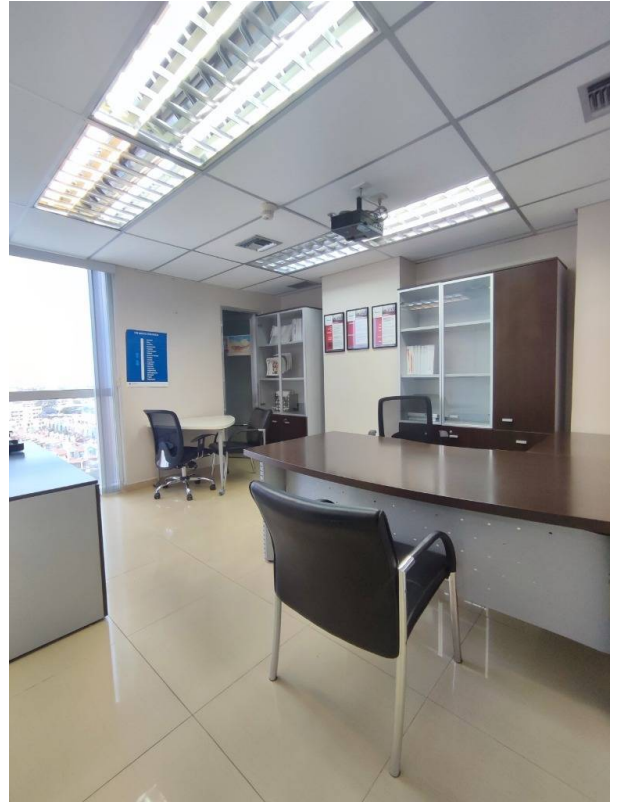
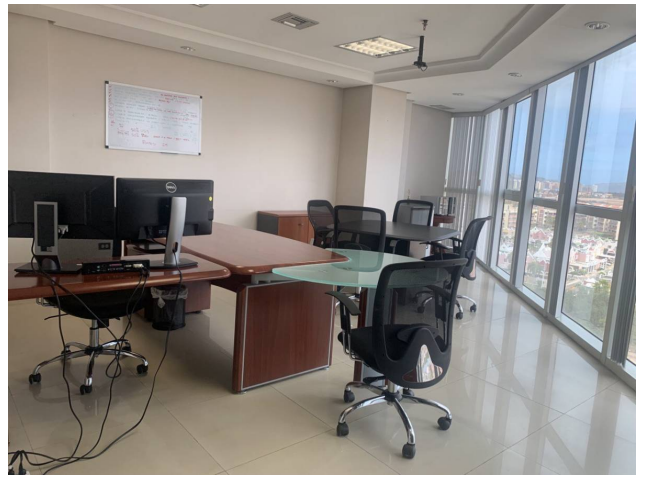
## References



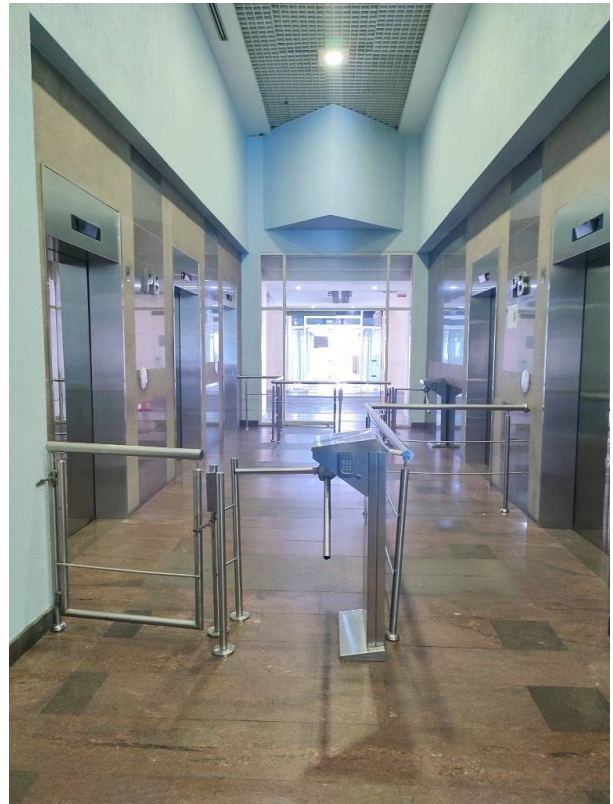
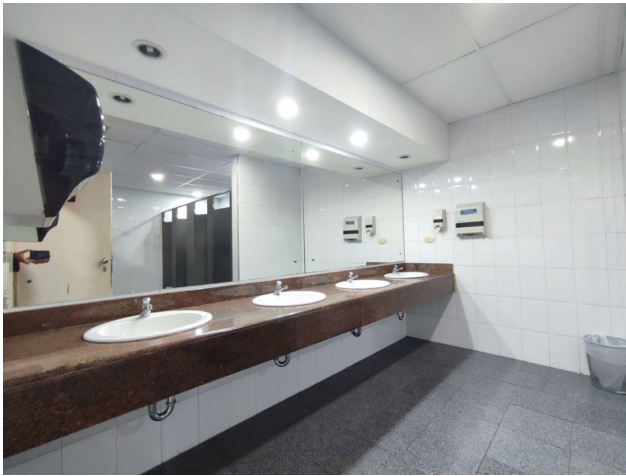
---

## Photo Catalog









**Avenida Tajamar N° 1, Marina Internacional Bahía Redonda Local N°LC-B, Complejo Turístico El Mor, Juan Antonio Sotillo, Puerto La Cruz, Anzoategui**  
T 584128336749 | [c21oceanik@century21.com.ve](mailto:c21oceanik@century21.com.ve) | <https://www.century21.com.ve>

Property subject to availability.  
Price subject to change without notice.

The sending of this file does not commit the parties to the subscription of any legal document. The information and

measurements are approximate and must be confirmed with the relevant documentation.