



**Deyanira López  
Boccardo**

# CENTURY 21.

Alfa

**ID: 16139**  
**dlopez@century21.com.ve**  
**+584142005050**



## Condominium for Sale

**Av Principal Conjunto Residencial Residencias PUERTA REAL, Mampote, Sucre, Caracas, Miranda**



**Sale: \$42,000**

**Property type: Condominium**

**Operation: Sale**

- **Land:** 111.0 sqm
- **Building:** 111.0 sqm
- **Bedrooms:** 2
- **Bathrooms:** 2
- **Parking lots:** 2
- **Stories:** 1
- **sqft Garden:** 30
- **Number of Elevators:** 2
- **Construction Quality:** Middle - High
- **Showers:** 2

- **Floor Type:** Porcelanato
- **environments:** 1

• Internet

• Vía Pavimentada

• Aire Acondicionado Central

• Profitable Construction Area: 111

• Year of construction: 1999

• Remodeling year: 2017  
• Common parking lots: 15

• Slab to slab height: -2

• M2 Patio: 35

## Property status

Age: 2002

## Description

Do you want to live in an environment totally surrounded by nature and comfort? Come and see this Ground Floor, it is ideal for you, with all the comfort of the city, surrounded by vegetation, birds, pure and fresh air, located just two kilometers from Terrazas del Avila, in Terrazas de Mampote

This Ground Floor has 111m<sup>2</sup> of which 35 make up an exquisite roofless terrace. The property has a social area with a beautiful kitchen integrated into it, a laundry area, a spacious master bedroom with a dressing room and an internal bathroom, a secondary bedroom with its external bathroom.

The apartment has two parking spaces, one next to the other, and a luggage room. Other than that, the building has parking spaces for visitors.

---

## Location

Av Principal Conjunto Residencial Residencias PUERTA REAL, Mampote, Sucre, Caracas, Miranda

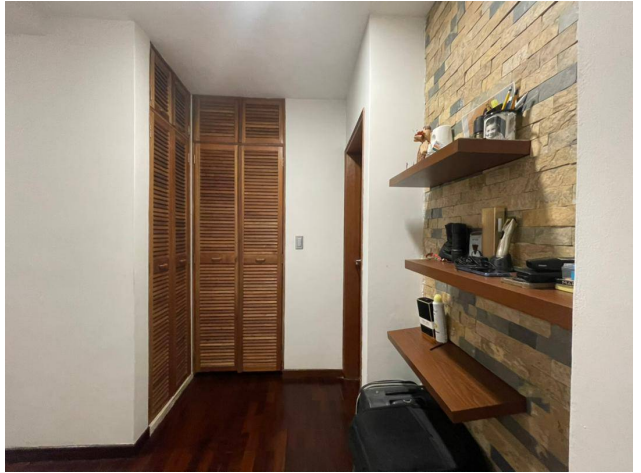
## References

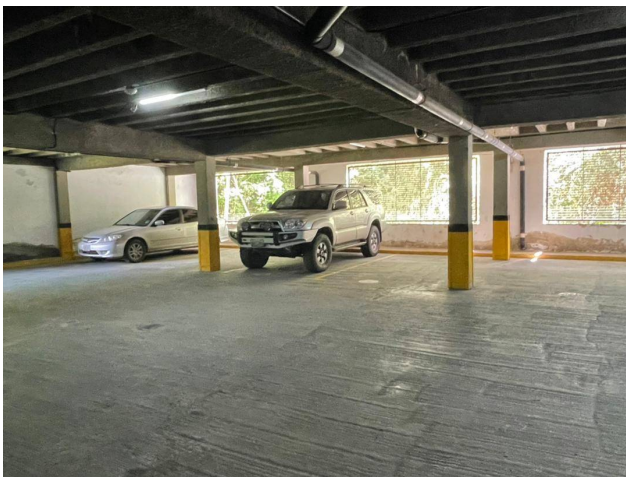


---

## Photo Catalog







Centro Empresarial CIUDAD CENTER, 5ta Transversal (Av. Sanatorio del Avila) Torre E, piso 5,,Sucre, Caracas, Miranda

Property subject to availability.

Price subject to change without notice.

The sending of this file does not commit the parties to the subscription of any legal document. The information and measurements are approximate and must be confirmed with the relevant documentation.