



Saricley Rodriguez

**CENTURY 21**

Las Mercedes Bienes Raíces

ID: 12291

srodriguez06@century21.com.ve

+584129924100



### Building for Sale

**PRINCIPAL EDIFICIO MARY, Libertador, Caracas, Distrito Capital**



**Sale: \$330,000**

**Property type: Building**

**Operation: Sale**

- **Land:** 511.4 sqm
- **Building:** 511.4 sqm
- **Bedrooms:** 6

- **Bathrooms:** 7

- Water
- Electricity
- Phone

### Property status

Age: 2008

Without Mortgage: Yes

### Description

For sale strategic Commercial Building with excellent location, it is located at street level on Av. principal de Catia. It consists of 511.40 square meters distributed according to the property document in 6 levels, identified as follows: The building has a Horizontal Property System and is a recent building (15 years). It has active service, telephone line, Internet and Simple Tv Antenna (Directv). Additionally, it has a 2,000-liter water tank for premises 1 and 2 and 1 1,500-liter tank in each apartment, installation of a 220 electrical system in the apartments and terrace, and complete installation of the fire system.

The building has a structure and facilities in perfect condition and is ideal for developing any type of business or investment since it is an excellent commercial and high-traffic point and is close to commerce, shopping centers, pharmacies, schools, markets, homes, parking and metro station.

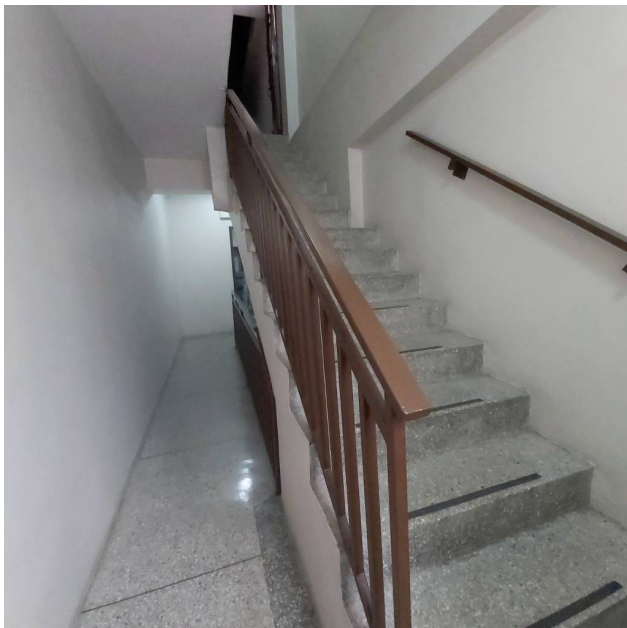
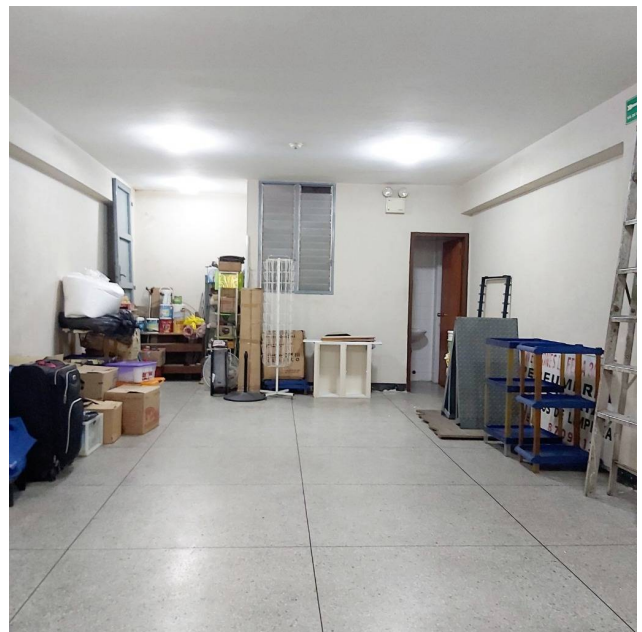
## Location

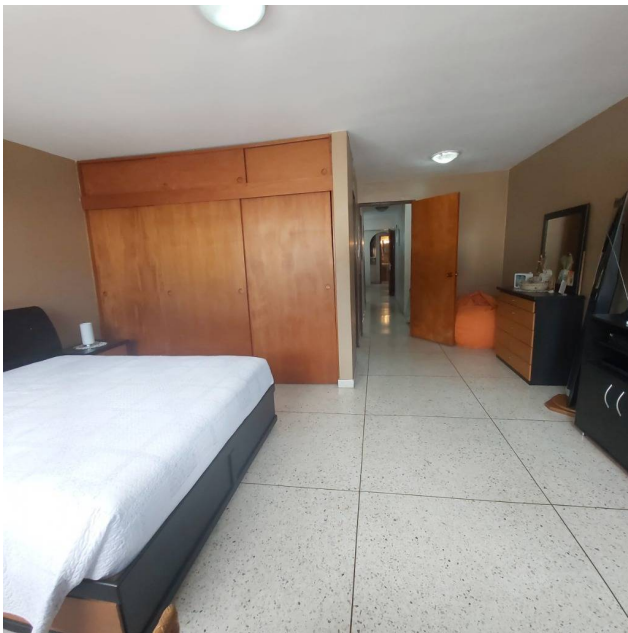
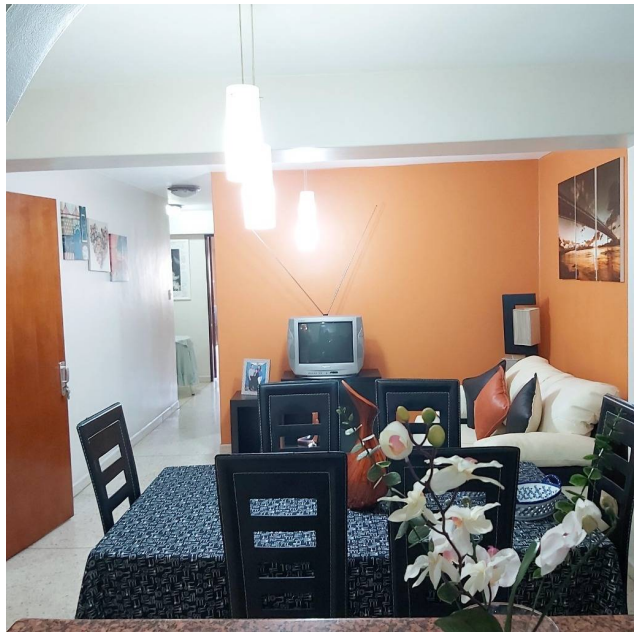
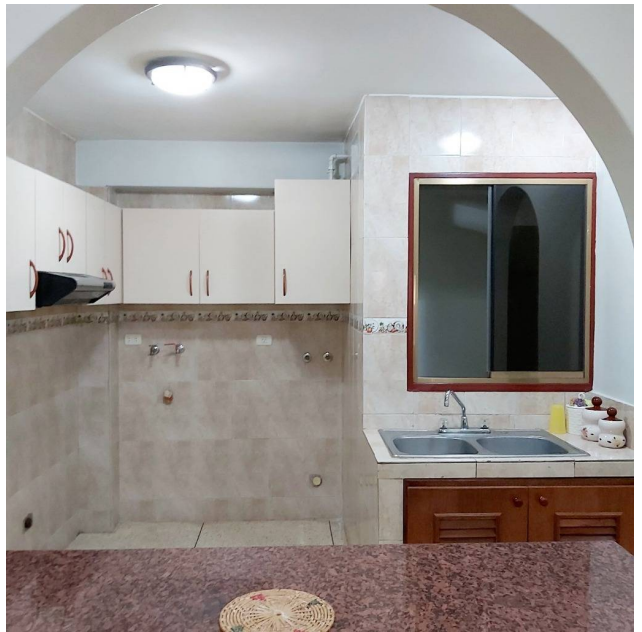
PRINCIPAL EDIFICIO MARY, Libertador, Caracas, Distrito Capital

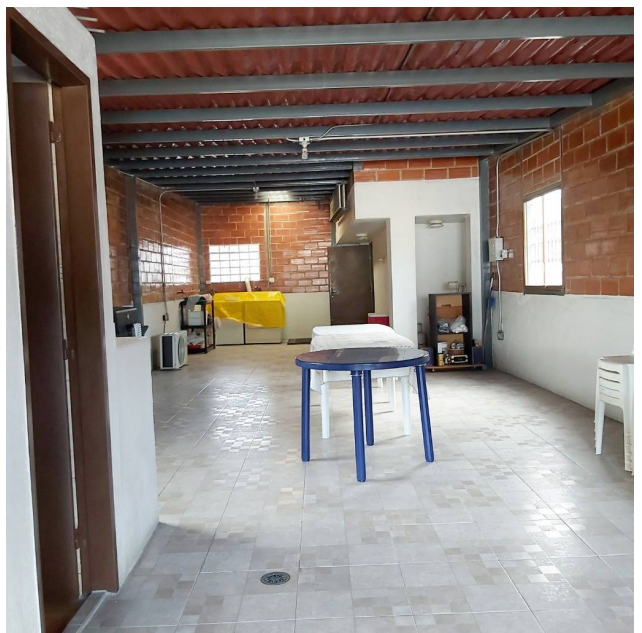
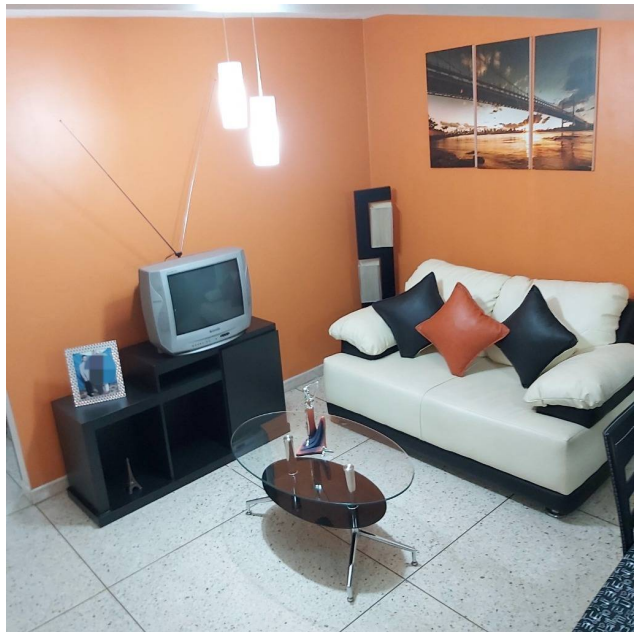
## References



## Photo Catalog









**Avenida Jalisco Las Mercedes, Torre Jalisco Piso 6 Avenida Jalisco Las Mercedes, Torre Jalisco P, Baruta, Caracas, Miranda**

**T 584241351262 | [c21lasmercedes@century21.com.ve](mailto:c21lasmercedes@century21.com.ve) | <https://www.century21.com.ve>**

Property subject to availability.

Price subject to change without notice.

The sending of this file does not commit the parties to the subscription of any legal document. The information and measurements are approximate and must be confirmed with the relevant documentation.